

This document contains a brief description of how to perform common ZeroPC administration functions.

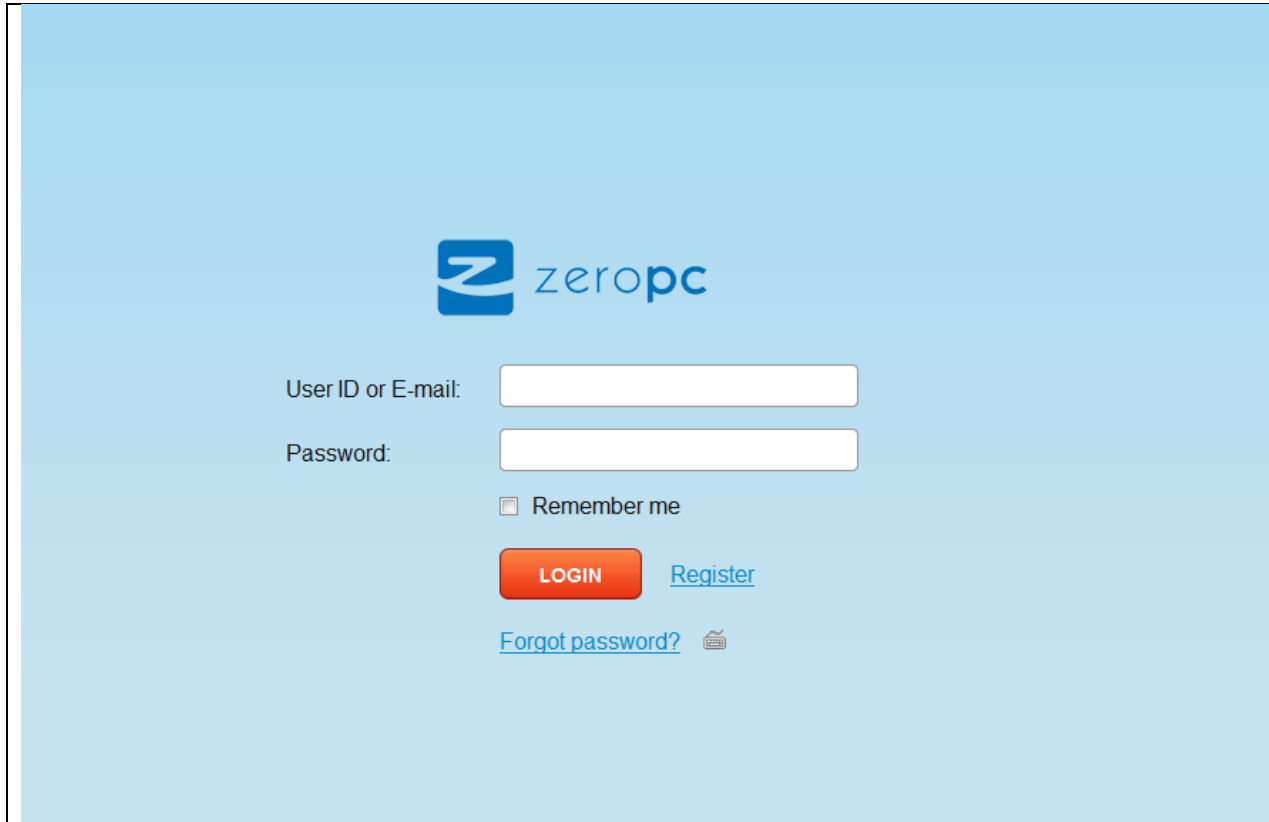
Table of Contents

Logging into ZeroPC	2
Enterprise Dashboard	3
Creating Users	4
Active Directory/LDAP Integration (<i>optional</i>).....	5
Managing Web Apps.....	6
Managing Windows Apps	7
Managing Application Permission	8
Managing Groups (<i>optional</i>)	9
Disposable Desktops (<i>optional</i>)	10

Logging into ZeroPC

Launch your favorite web browser and load: `http://<your zeropc IP>/os`

Where *<your zeropc IP>* is the IP address or domain name that points to your installed ZeroPC system.




User ID or E-mail:

Password:

Remember me

[LOGIN](#) [Register](#)

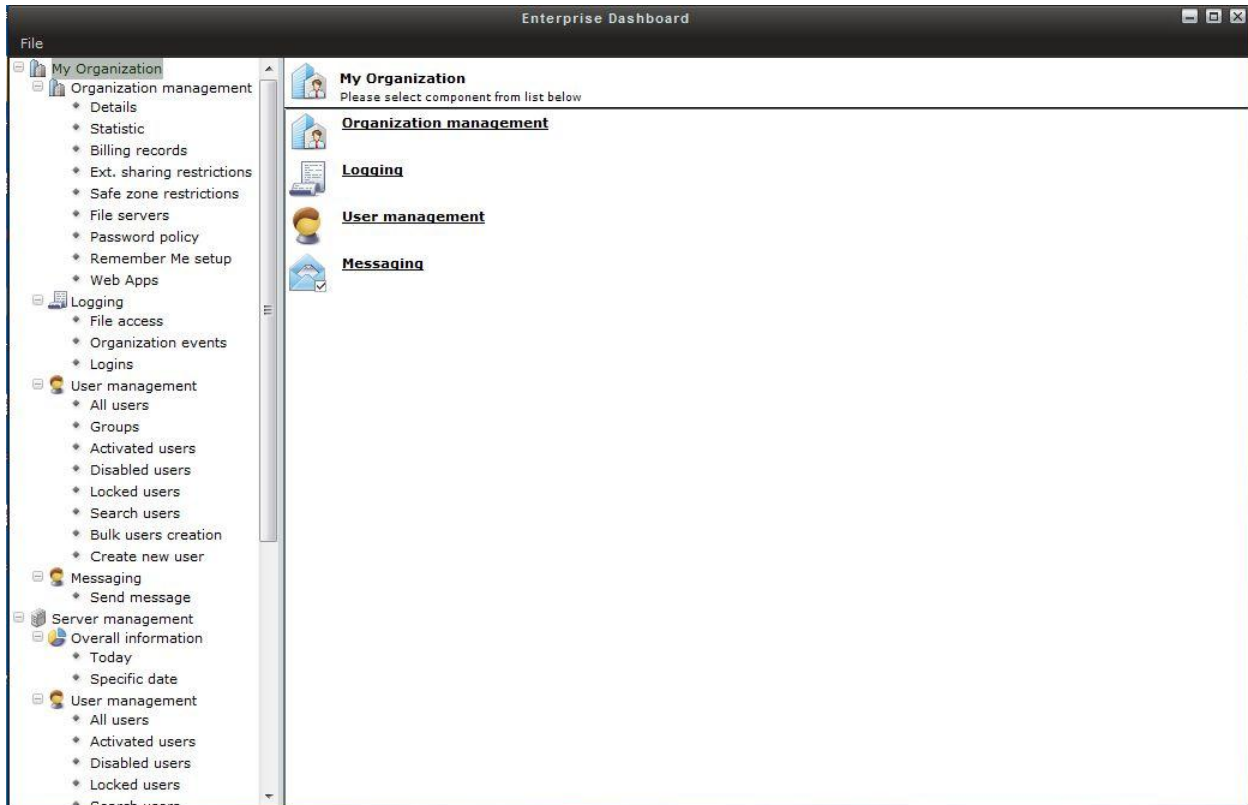
[Forgot password?](#) 

Login with username: root, password: startnow

Note: when you first install ZeroPC the root password is set to “startnow”. You can – and should – change the root password once you have logged in.

Enterprise Dashboard

The Enterprise Dashboard is the user interface that can be used to perform the administration functions described in this document.



You can launch this tool by clicking on the “apps” button, then “Settings...” then “Enterprise Dashboard”.

Creating Users

To add new users to your ZeroPC system:

The screenshot shows the 'Enterprise Dashboard' window with the 'Create new user' wizard. The sidebar on the left contains a tree view under 'My Organization' with categories like 'Organization management', 'Logging', 'User management', 'Messaging', 'Server management', and 'Overall information'. The 'Create new user' option is highlighted under 'User management'. The main content area is titled 'Create new user' and contains the following form fields:

- User ID: *
- Password:
- First name:
- Last name:
- Nickname:
- E-mail address: *

A note indicates '* Mandatory fields'. Below the form is a 'Group list' table:

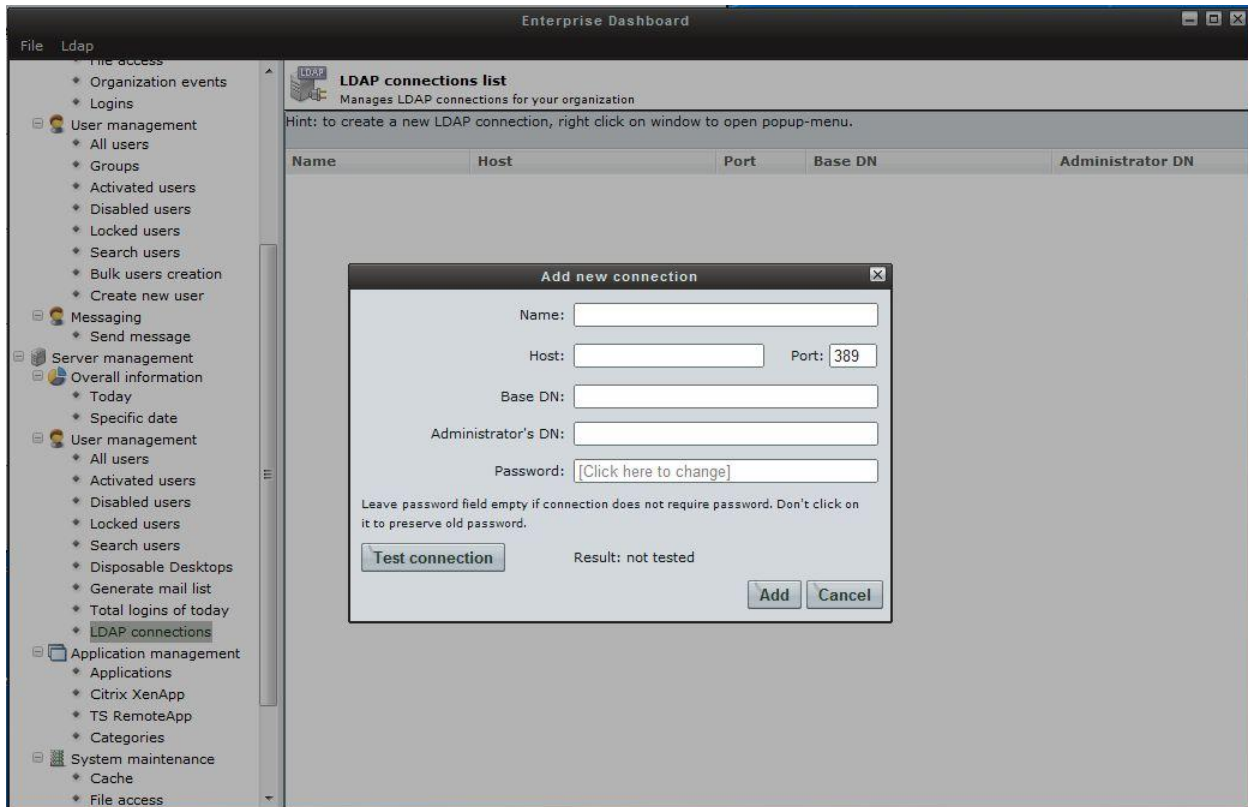
Selected	Group name
<input type="checkbox"/>	Admin
<input type="checkbox"/>	liltest
<input type="checkbox"/>	test group storage 1

Below the table are 'Select all' and 'Select none' buttons. At the bottom right of the dashboard are 'Back' and 'Next' buttons.

Once a new user is created they will receive an email welcoming them to ZeroPC. You can optionally force a password reset (2nd page of the wizard) that will prompt the new user to enter their own private password on their first login.

Active Directory/LDAP Integration (optional)

ZeroPC can be configured to integrate to your Active Directory/LDAP system. Note that this is an optional feature. If you do not use AD or LDAP please disregard.

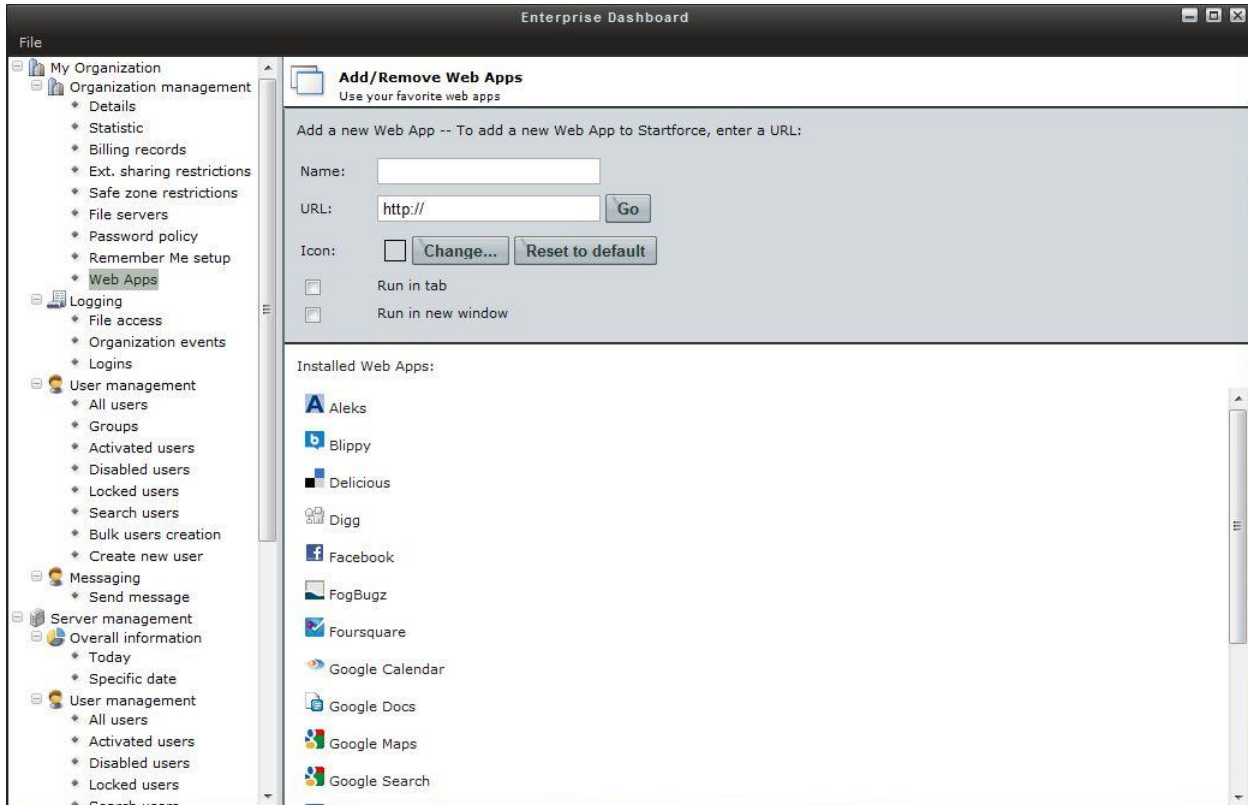


There is no need to import AD/LDAP profiles explicitly. Once an AD/LDAP connection is defined in ZeroPC then the system will attempt to authenticate all subsequent logins to your AD/LDAP server. If that authentication fails then ZeroPC will attempt to authenticate to its own username/password database.

If the AD/LDAP authentication is successful then, if necessary, ZeroPC will automatically create a new ZeroPC user profile for that user and then present the user with their web desktop. Subsequent logins for that user will continue to authenticate to AD/LDAP but their ZeroPC web desktop will be persistent.

Managing Web Apps

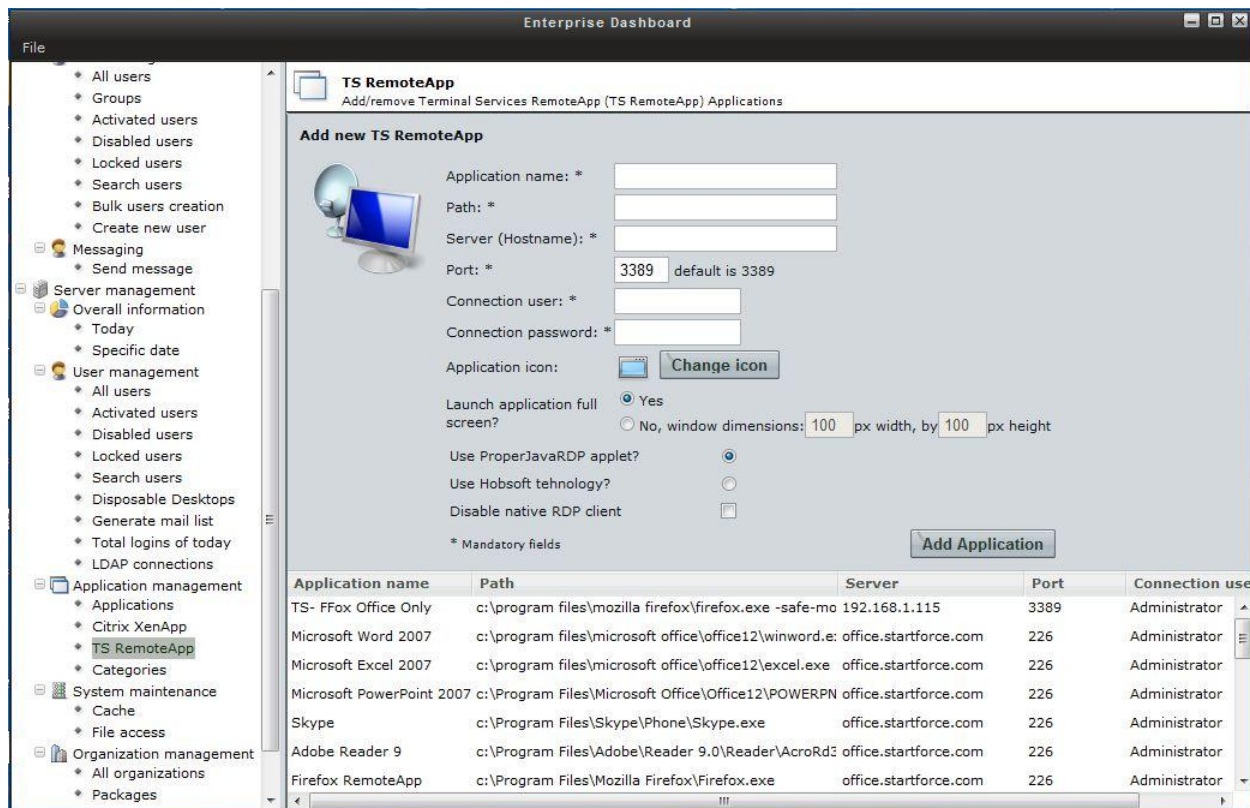
To provide access for ZeroPC users to web-based applications:



Managing Windows Apps

To provide access for ZeroPC users to Windows-based applications (e.g., MS Word, Excel, etc.).

The example below shows the interface control for adding Windows applications hosted on a Windows Server running Terminal Services. ZeroPC also supports integration to Citrix XenApp.



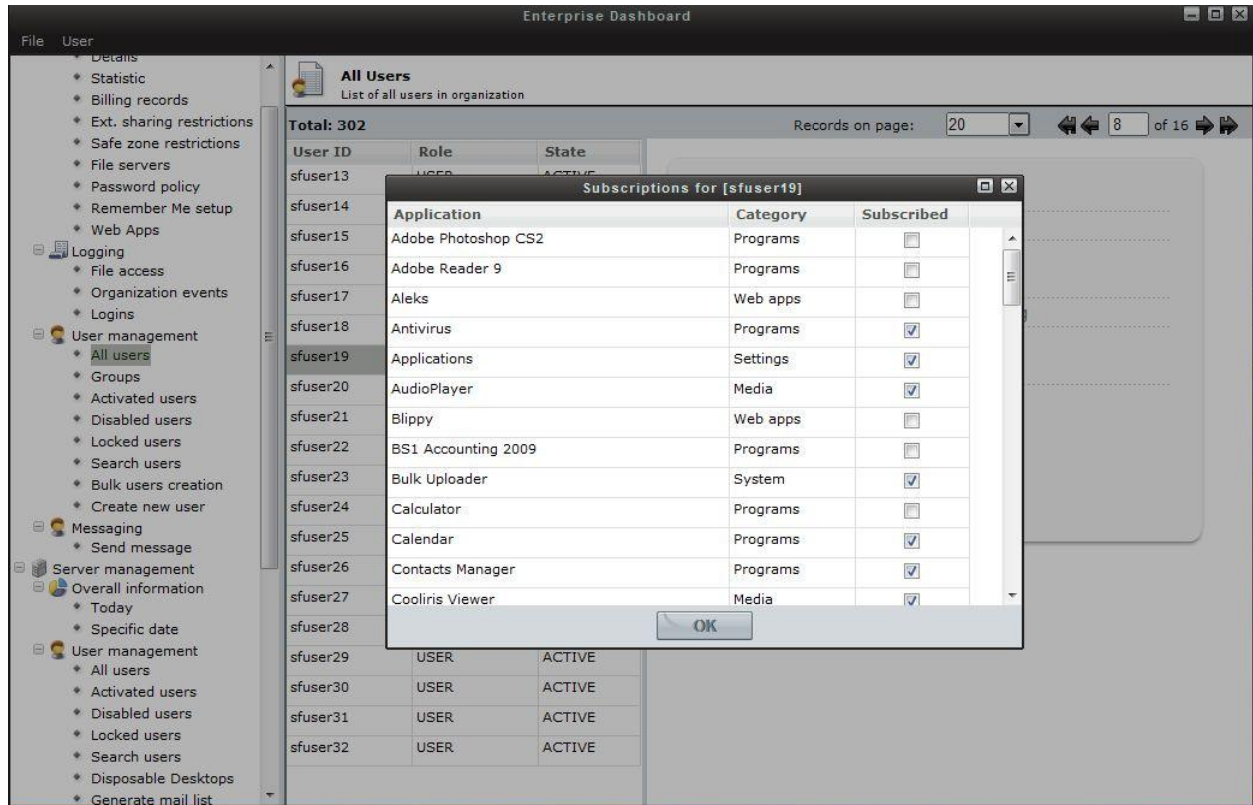
Special notes about TS RemoteAPPs:

- These apps require a username/password. This is the designated remote app user specified on the Windows RDS server.
- Select the “Use ProperJavaRDP Applet” option. The Hobsoft option is no longer supported and will be removed in future releases.
- Typically the “Disable native RDP client” should be left unchecked. This is relevant to our ISO client boot option and provides the most optimal user experience in this environment.

As with web-based applications you can select the icon to be associated with the Windows app.

Managing Application Permission

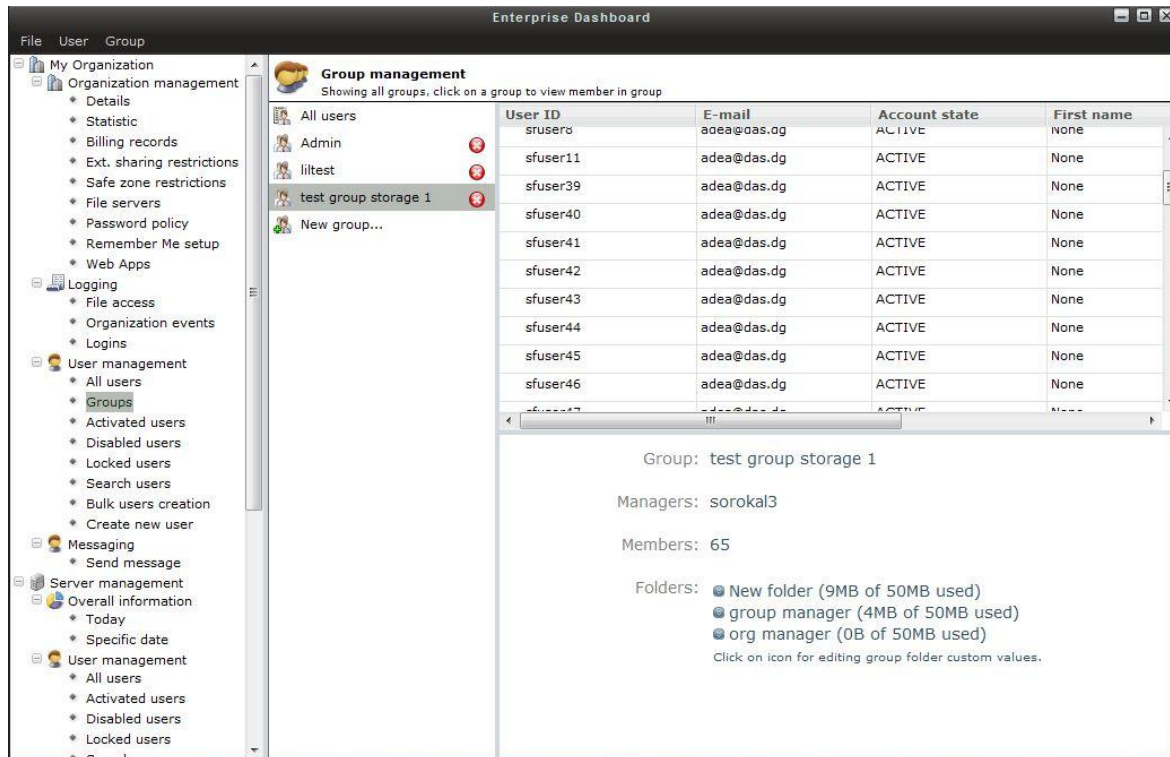
Once applications (web-based and Windows-based) are defined then you must grant permission to these apps for select users.



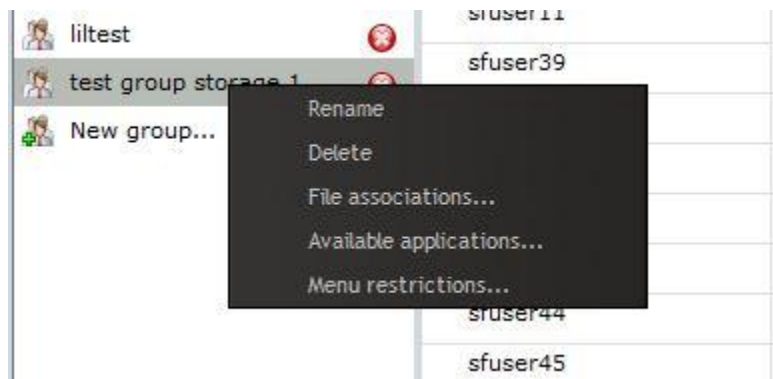
Select the user for whom you would like to manage application permission then right-click on that user. Select the “Subscribed applications...” option from the pop-up menu. Scroll to find the applications and check to grant permission, uncheck to revoke permission.

Managing Groups (optional)

Groups can be defined in the ZeroPC system. A user can be a member of one or more groups. One of the benefits of using the groups feature is to allow the administrator to manage application access across multiple users.



To manage Group features right-click on the group and select the appropriate option from the pop-up menu:



To add a user to a group click on the “All Users” group (the first one in the list of groups). This will display the users defined in the system. Find the user you want to add and right-click on that user. Select the “Add to group...” option in the pop-up menu and select the appropriate group.

Disposable Desktops (optional)

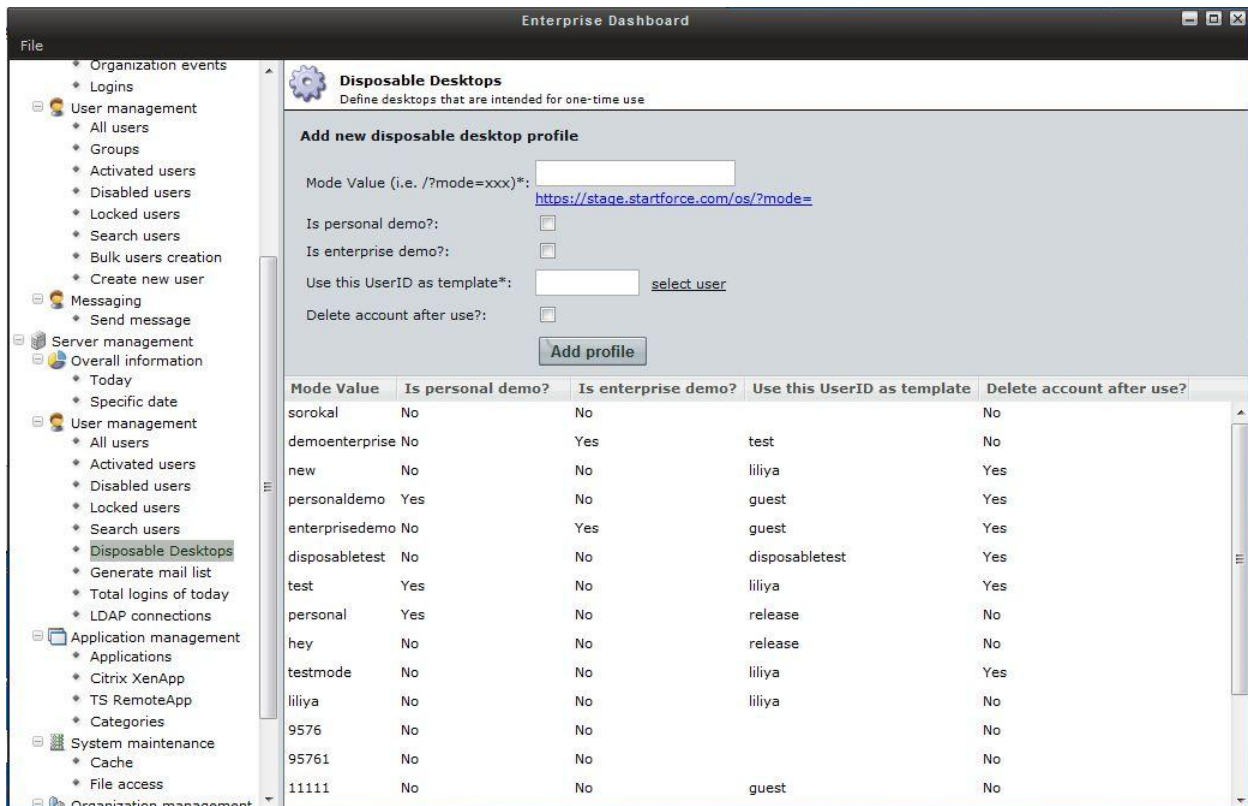
All defined ZeroPC users are provided a persistent web desktop. Whenever they login regardless of location they will get their own personal desktop just as they left it from their last session.

In some use cases, particularly in educational solutions, it is preferable to provide a user (e.g., student) with a one-time use desktop.

The user is provided with a specific URL. e.g., <http://127.1.2.3/os?mode=fifthgradescience>

Note the “mode=” parameter and value. This parameter instructs ZeroPC to create a new copy of a desktop based on the “fifthgradescience” template. The user is presented with a web desktop that is fully functional containing all of the assets defined in the specified template. This web desktop is relevant only to that logged in user. Once they log out of ZeroPC that copy is then discarded and can not be accessed again.

To use this feature:



The screenshot shows the Enterprise Dashboard interface. The main panel is titled "Disposable Desktops" and contains the following form fields:

- Mode Value (i.e. /?mode=xxx)*: <https://stage.startforce.com/os/?mode=>
- Is personal demo?:
- Is enterprise demo?:
- Use this UserID as template*: [select user](#)
- Delete account after use?:

Below the form is a table with the following columns: Mode Value, Is personal demo?, Is enterprise demo?, Use this UserID as template, and Delete account after use?.

Mode Value	Is personal demo?	Is enterprise demo?	Use this UserID as template	Delete account after use?
sorokal	No	No		No
demoenterprise	No	Yes	test	No
new	No	No	liliya	Yes
personaldemo	Yes	No	guest	Yes
enterprisedemo	No	Yes	guest	Yes
disposablestest	No	No	disposablestest	Yes
test	Yes	No	liliya	Yes
personal	Yes	No	release	No
hey	No	No	release	No
testmode	No	No	liliya	Yes
liliya	No	No	liliya	No
9576	No	No		No
95761	No	No		No
11111	No	No	guest	No

- Enter the “mode” value in the right hand panel of the Enterprise Dashboard.
- Leave the “personal” and “enterprise” demo checkboxes unchecked – this is for our hosted ZeroPC system.

- A ZeroPC user must be assigned to this disposable desktop template. Typically a specific user is created for the sole purpose of managing this template.
- For technical housekeeping purposes it is good practice to check the “Delete account after use” checkbox. This will cause the ZeroPC system to physically remove the assets related to the disposable desktop created when accessing the system using the “mode=” parameter.

Once the template has been created, you can then login to that template using the username/password of the user associated to the template. Any changes made to that web desktop are then reflected in any web desktop created using the “mode=” parameter.